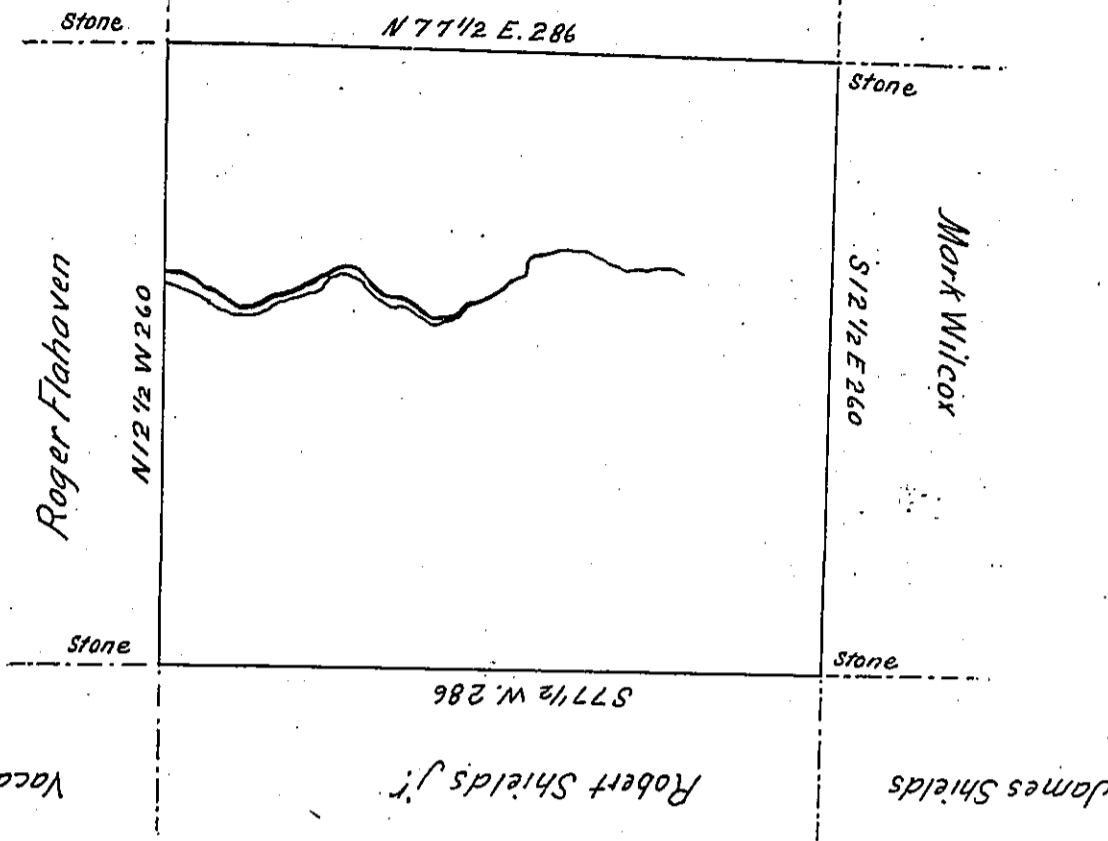


Rowland Parry

David Shields

Geo. Lawson



By Virtue of a Warrant dated the 23^d July 1785 Surveyed the 22^d November 1785
 to Timothy Cobl. The above described tract of Land Situate on the Waters of a branch
 of the Lechawax in Northampton County Containing Four hundred and thirty
 eight Acres Seventy perches and the Allowance of Six p. Cent &c.

(Now Wayne County)

To John Lukens Esquire }
 Survey^r General }

p. Geo. Palmer

IN TESTIMONY that the above is a copy of the original remaining on file in
 the Department of Internal Affairs of Pennsylvania, made
 conformably to an Act of Assembly approved the 16th day of
 February, 1833, I have hereunto set my Hand and caused
 the Seal of said Department to be affixed at Harrisburg,
 this thirty first day of March 1904.

Geo. R. Brown
 Secretary of Internal Affairs.